



Play-based Activities



Empowers you to be your child's first teacher



Supports your child's transition to school



Supports development, learning and confidence



Connects you to the community



We would love to hear from you!



Find us on Facebook!

- 0437 123 899
- hippyaustralia.bsl.org.au
- HIPPYGeraldton@childaustralia.org.au

About Child Australia



Child Inclusive Learning and Development Australia (Child Australia) is a not-for-profit organisation dedicated to improving

developmental outcomes for children through education, early childhood services, family support and advocacy. For more information regarding services available from Child Australia please visit www.childaustralia.org.au

The Home Interaction Program for Parents and Youngsters is funded by the Australian Government through the Department of Social Services.

The Brotherhood of St Laurence holds the licence to operate HIPPY in Australia.



Home Interaction Program for Parents and Youngsters



HIPPY is a FREE two year, play based program that brings the love of learning into your home.

We provide activity packs and story books so you can learn together with your child!

What is HIPPY?

A HIPPY Mentor supports you as your child's first teacher. The program starts in the year before your child attends kindy, when they are around age 3.

Home Visits

Through regular Home Visits, HIPPY mentors provide a range of free, fun and engaging activities and resources. Your mentor will practice the activities with you before you complete them with your child at a time that suits your family.

Group Gatherings

Join us for our HIPPY Group Gatherings and participate in activities with other HIPPY families. The gatherings provide opportunities to learn about your child's development, services in the community and meet other families.



Everywhere learning!

The HIPPY curriculum promotes the idea that learning can happen anywhere at anytime.



HIPPY is for the whole family!

Children have opportunities to:

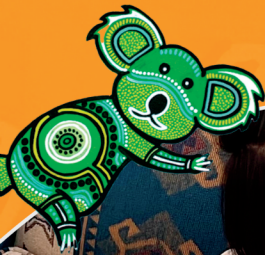
- build their self esteem and confidence
- develop language and listening skills
- enjoy meaningful connections with parents/carers as they engage in the activities

Parents or Carers have opportunities to:

- increase understanding of how your child develops and learns
- create a supportive learning environment at home
- help children become ready for school

Community Connection

We connect HIPPY families to local activities and community support networks.



Children can learn everyday with their families.